

The 30th Australian Rogaining Championships - The Wandering West Rogaine. 6th and 7th June 2009



Thanks to
 AST Australia for loan of satellite phones.
 Bidgetown Grumpy Old Men for trophies.
 Telwest for loan of computer equipment.
 Jack Del Borrello of DelMedia for the logo.
 Elisa Skillen of DEC.

Thanks to the Farmers
 Allan & Kryss Clarke
 Chelsea Clarke & Chris McEnroe
 Graham & Anne Watts
 Wayne & Janine Thompson
 Warren & Jenny Craig
 Gavin & Nola Craig
 Vincent Pike

Legend

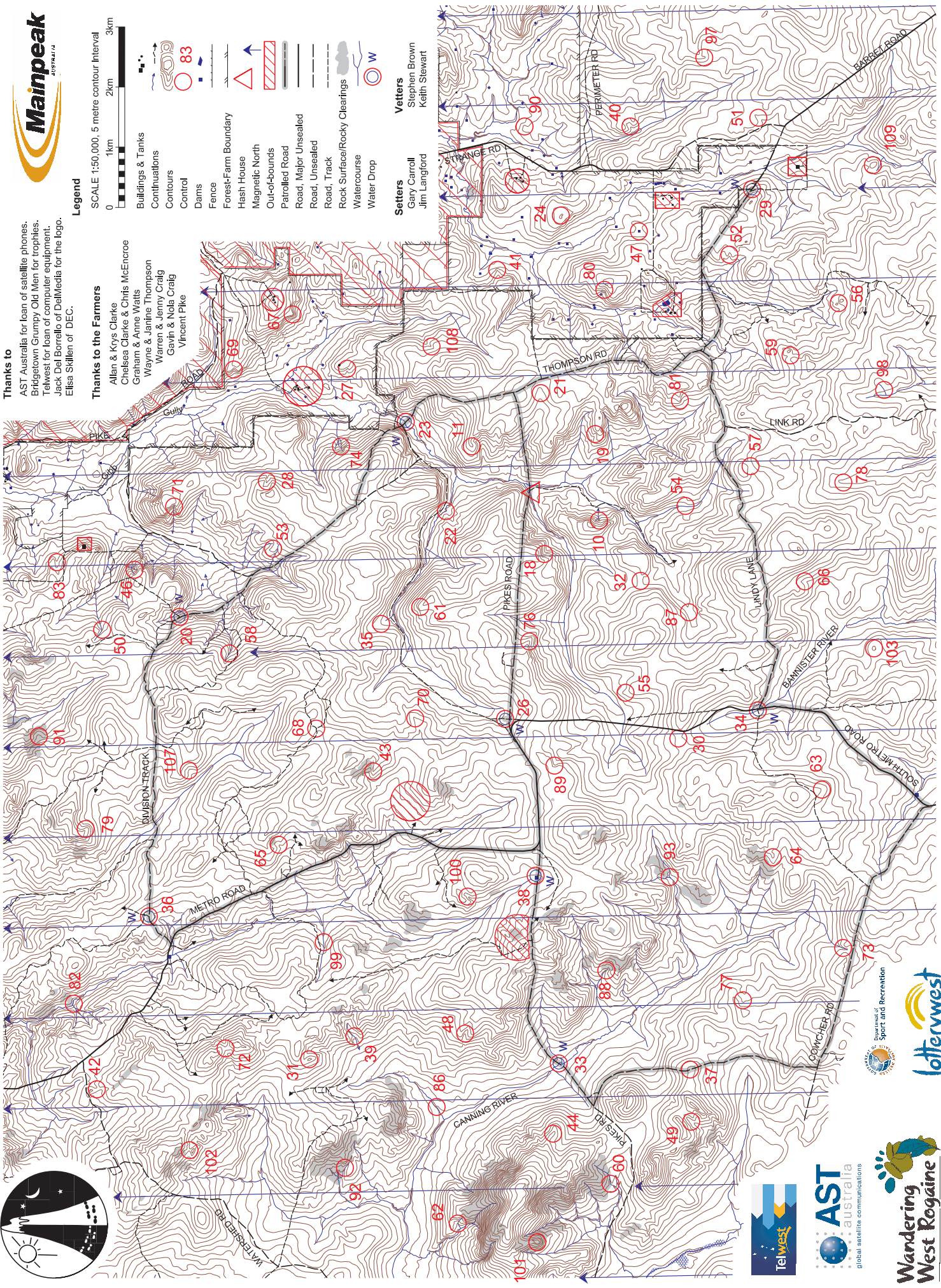
- SCALE 1:50,000, 5 metres contour interval
 0 1km 2km 3km
- Buildings & Tanks
 - Contourlines
 - Contours
 - Control
 - Dams
 - Fence
 - Forest-Farm Boundary
 - Hash House
 - Magnetic North
 - Out-of-Bounds
 - Patrolled Road
 - Road, Major Unsealed
 - Road, Unsealed
 - Road, Track
 - Rock Surface/Rocky Clearings
 - Watercourse
 - Water Drop

Setters

- Gary Carroll
- Jim Langford

Vetters

- Stephen Brown
- Keith Stewart



This map was produced using OCAD 9 by the Western Australian Rogaining Association. wa.rogaine.asn.au. Data supplied by Landgate and used under copy licence 393/93. Possession of this map does not give right of entry to this area.

The Wandering West Rogaine. 30th Australian Championships. Western Australia. 6th and 7th June 2009.

Num	Description	Pts
10	The southern watercourse, upper part	10
11	The spur	10
18	The gully	10
19	The gully	10
20	The track junction (water)	20
21	The gully, broad	20
22	The watercourse, bend	20
23	Track and watercourse crossing, east side (water)	20
24	The knoll, broad	20
26	The track - 70m north of Pikes Rd (water)	20
27	The gully	20
28	A watercourse junction	20
29	The fence, corner (water)	20
30	The saddle, broad	30
31	The knoll	30
32	The saddle	30
33	The watercourse and track crossing (water)	30
34	The western track and watercourse junction (water)	30
35	The gully	30
36	The track junction (water)	30
37	The track, east side, on crest	30
38	A clearing, NE side of the dam (water)	30
39	The watercourse	30
40	The gully	40
41	The spur	40
42	The saddle	40
43	The spur	40
44	The spur	40
46	The southern watercourse	40
47	The dam, 80m at 230°	40
48	The gully	40
49	The northern gully	40
50	The watercourse, bend	50
51	The gully	50
52	The gully	50

Num	Description	Pts
53	The spur	50
54	The watercourse	50
55	The spur	50
56	The saddle	50
57	The saddle	50
58	The watercourse	50
59	The saddle	50
60	The northern watercourse, bend. Caution - 3m cliff nearby	60
61	The spur	60
62	The eastern watercourse, bend	60
63	The spur, broad	60
64	The spur	60
65	The gully	60
66	The gully	60
67	The spur	60
68	The track junction	60
69	The gully	60
70	The spur	70
71	The watercourse, upper part	70
72	The saddle	70
73	The watercourse, upper part	70
74	The southern watercourse	70
76	The spur	70
77	The gully, broad	70
78	The gully, broad	70
79	The spur	70
80	The gully	80
81	The spur, top of a break-away	80
82	The eastern watercourse, south east side of rock surface	80
83	The gully	80
86	The watercourse	80
87	The gully, broad	80
88	The watercourse	80
89	The gully, upper part	80

Num	Description	Pts
90	A knoll	90
91	The spur	90
92	The watercourse	90
93	The watercourse junction	90
97	The spur	90
98	The eastern watercourse	90
99	The watercourse	90
100	The gully	100
101	The knoll. Caution - many huge boulders	100
102	The saddle	100
103	The knoll, broad	100
107	The gully	100
108	The gully	100
109	The knoll	100

Start 1200 Saturday
Finish 1200 Sunday

Hash House
Opens at 1600 Sat
Closes by 1300 Sun

Moonrise: 1552 Saturday
Sunset: 1714 Saturday

Moonset: 0639 Sunday
Sunrise: 0708 Sunday

Late Penalty
10 points per minute or part minute.

You will be LATE (no points) later than 1230 Sunday

Controls Used: 83
Total Points: 4580



Water Drops: At Controls 20, 23, 26, 29, 33, 34, 36 & 38

If a team member becomes sick or injured please make your way to a water drop or a patrolled road which are indicated on the map.

Handwritten signature or initials in blue ink.